



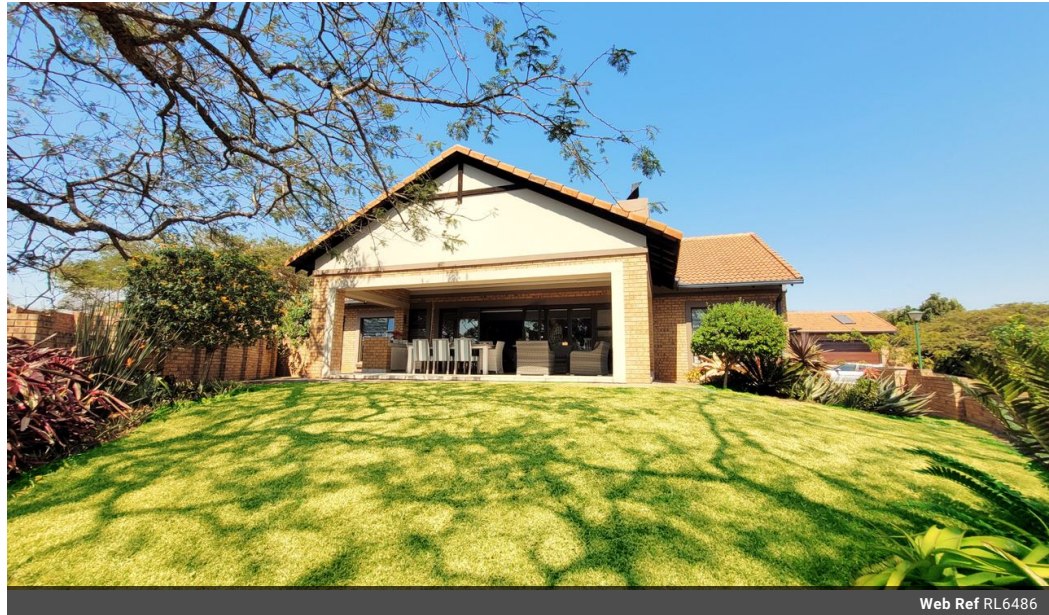
Ronel Vorster

Non-Principal Property Practitioner
Registered with PPRA (FFC 116 387 4)
079 096 2026
ronel@kellaprince.co.za

Contact Head Office

013 7544400

The Crossing Shopping Centre, Shop 78, Off R40, Nelspruit, Mpumalanga 1200



Web Ref RL6486



R3,900,000

3 2.5 2

Monthly Bond Repayment R40,255.35

Calculated over 20 years at 11% with no deposit.

Transfer Costs R270,050.00 **Bond Costs** R51,610.00

These calculations are only a guide. Please ask your conveyancer for exact calculations.

Monthly Levy R3,051 **Monthly Rates** R2,523

Exquisite 3-Bedroom Retirement Home in Bateleur Estate

Discover the perfect blend of comfort and luxury in this spacious 3-bedroom retirement home in the ever-popular Bateleur Estate. This stunning residence boasts large open-plan living areas with a gas and coal braai option, which is ideal for entertaining. Step out onto a gorgeous patio that overlooks a beautifully irrigated garden, where you can enjoy the tranquility and scenic views.

The heart of the home is a beautifully designed kitchen featuring granite countertops, a gas stove, and a double-eye-level oven, perfect for the avid cook. With ample cupboard space, you'll find storage a breeze. The property also includes a solar geyser, ensuring energy efficiency.

Additional features include an extra-large garage with direct access to the house, a spacious built-in carport, and mesh screening on select windows and doors for...

Features

Pets Allowed Yes

Interior

Bedrooms	3
Bathrooms	2.5
Kitchens	1
Recep. Rooms	2
Furnished	No

Exterior

Garages	2
Carports / Parkings	2
Security	Yes
Pool	No
Views	True

Sizes

Floor Size	312m ²
Land Size	835m ²