



Regina Bothma
 Non-Principal Property Practitioner
 Registered with PPRA (FFC 095 211 4)
 0825756860
 regina@kellaprinCE.co.za

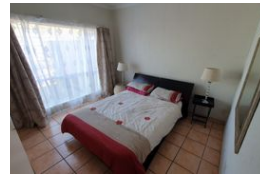
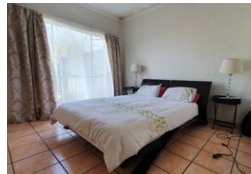
Contact Head Office

013 7544400

The Crossing Shopping Centre, Shop 78, Off R40, Nelspruit, Mpumalanga 1200



Web Ref RL6599



R730,000



Monthly Bond Repayment R7,534.98
 Calculated over 20 years at 11% with no deposit.

Transfer Costs R25,898.00 **Bond Costs** R19,565.00
 These calculations are only a guide. Please ask your conveyancer for exact calculations.

Monthly Levy R1,190 **Monthly Rates** R463

SECURE COMPLEX LIVING

This well-located ground floor unit offers a perfect blend of convenience and modern finishes. Ideal for first-time buyers or investors, it features:

- Open-Plan Kitchen & Living Area: Newly installed kitchen cupboards with granite countertops add a sleek, contemporary touch.
 - Outdoor Living: The living area opens onto a spacious verandah, perfect for relaxing or entertaining.
 - Two Comfortable Bedrooms: Well-sized bedrooms with plenty of natural light.
 - One Bathroom: Neat and functional to cater to your needs.
 - Utilities: Pre-paid water and electricity for easy budgeting.
- Situated in the heart of Nelspruit CBD, this unit offers easy access to shops, schools, and public transport. Don't miss out—schedule a viewing today!

Features

Interior		Exterior		Sizes	
Bedrooms	2	Carports / Parkings	1	Floor Size	69m ²
Bathrooms	1	Security	Yes	Land Size	69m ²
Kitchens	1	Pool	No		
Recep. Rooms	1	Views	False		
Furnished	No				