



Regina Bothma
 Non-Principal Property Practitioner
 Registered with PPRA (FFC 095 211 4)
 0825756860
 regina@kellaprinCE.co.za

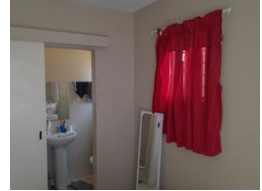
Contact Head Office

013 7544400


The Crossing Shopping Centre, Shop 78, Off R40, Nelspruit, Mpumalanga 1200



Web Ref RL6018



R800,000

 2  2

Monthly Bond Repayment R8,257.51
 Calculated over 20 years at 11% with no deposit.

Transfer Costs R25,898.00 **Bond Costs** R19,565.00
 These calculations are only a guide. Please ask your conveyancer for exact calculations.

Monthly Levy R800 **Monthly Rates** R600

2 Bedroom , 2 bathroom Apartment for sale in Nelspruit Ext 29

Great location. This ground floor, 2 bedroom, 2 bathroom apartment, is in this well sought after Complex, Lockwood, in Extension 29, opposite the Golfview Complex. Boasting an open plan kitchen and living area, the living area leads out onto a balcony with a built-in braai. Both bathrooms have a bathroom en suite. There is a single covered carport and several visitors parking. KellaprinCE

Properties Nelspruit (Pty) Ltd holds a valid business FFC No: F100812, registered with the PPRA. Non-Principal member registered with the PPRA – REGINA BOTHMA FFC# 0952114

Features

Interior		Exterior		Sizes	
Bedrooms	2	Carports / Parkings	1	Floor Size	63m ²
Bathrooms	2	Security	No	Land Size	4,093m ²
Kitchens	1	Pool	No		
Recep. Rooms	2	Views	False		
Furnished	No				

