



**Regina Bothma**  
 Non-Principal Property Practitioner  
 Registered with PPRA (FFC 095 211 4)  
 0825756860  
 regina@kellaprinCE.co.za

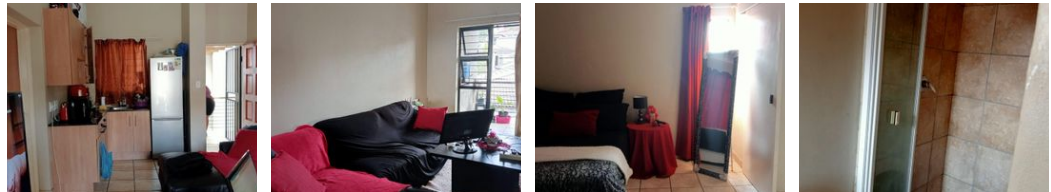
Contact Head Office

013 7544400

The Crossing Shopping Centre, Shop 78, Off R40, Nelspruit, Mpumalanga 1200



Web Ref RL5850



**R580,000**

**Monthly Bond Repayment** R5,986.69  
 Calculated over 20 years at 11% with no deposit.

**Transfer Costs** R21,217.00    **Bond Costs** R15,795.00

These calculations are only a guide. Please ask your conveyancer for exact calculations.

**Monthly Levy** R835    **Monthly Rates** R600



**LOCKWOOD 1 BED UNIT FOR SALE**

Lock up and go 1 bedroom with en-suite bathroom (shower and toilet) flat in Nelspruit, near Checkers Hyper and all amenities.

It is an open plan kitchen/living area with a sliding door walking out on a veranda and built-in braai.

There is one under-cover parking plus extra parking available for guests

**Features**

Interior		Exterior		Sizes	
Bedrooms	1	Carports / Parkings	1	Floor Size	42m <sup>2</sup>
Bathrooms	1	Security	No	Land Size	3,444m <sup>2</sup>
Recep. Rooms	1	Pool	No		
Furnished	No	Views	False		

