

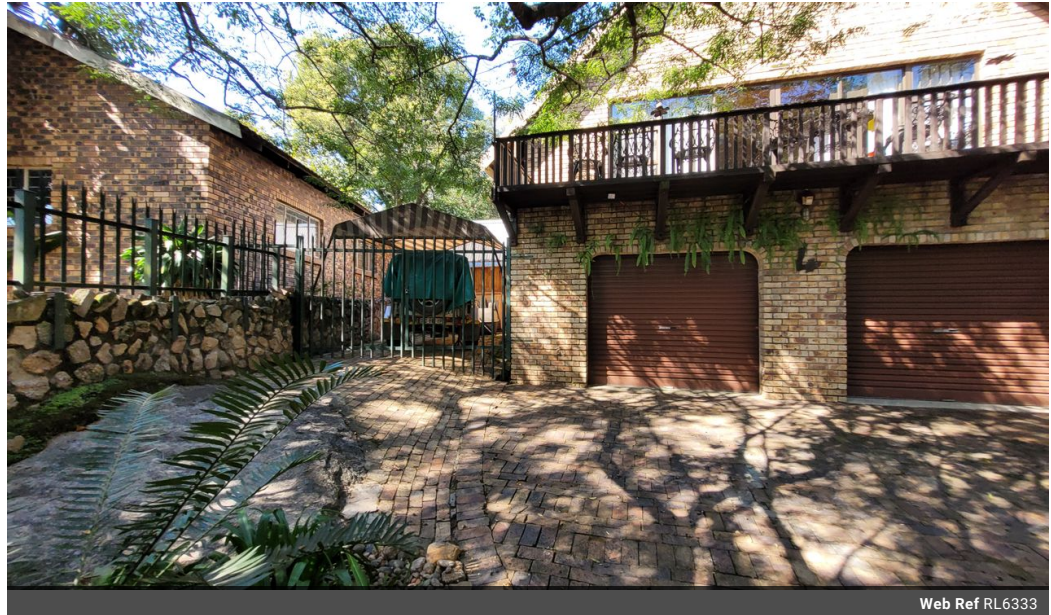


Regina Bothma
 Non-Principal Property Practitioner
 Registered with PPRA (FFC 095 211 4)
 0825756860
 regina@kellaprinCE.co.za

Contact Head Office

013 7544400

The Crossing Shopping Centre, Shop 78, Off R40, Nelspruit, Mpumalanga 1200



Web Ref RL6333



R2,400,000

Monthly Bond Repayment R24,772.52
 Calculated over 20 years at 11% with no deposit.

Transfer Costs R105,552.00 **Bond Costs** R36,530.00
 These calculations are only a guide. Please ask your conveyancer for exact calculations.

Monthly Rates R1,230

 4  3  2

FAMILY HOME IN SONHEUWEL AREA

Facebrick, low maintenance 4 bedrooms and 3 bathrooms family home. All the rooms are spacious with a open plan kitchen / living area. Double garage and a fairytale garden. Near schools, hospital and a shopping complex.

Features

Pets Allowed Yes

Interior
 Bedrooms 4
 Bathrooms 3
 Kitchens 1
 Recep. Rooms 2
 Studies 1
 Furnished No

Exterior
 Garages 2
 Carports / Parkings 3
 Security Yes
 Pool No
 Views False

Sizes
 Floor Size 310m²
 Land Size 1,745m²