

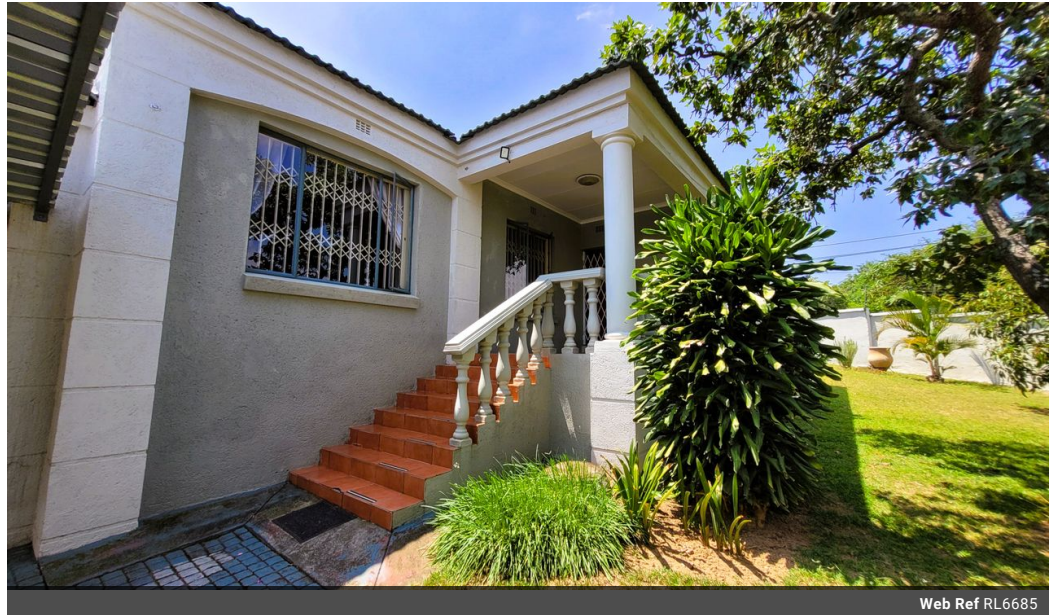


**Regina Bothma**  
 Non-Principal Property Practitioner  
 Registered with PPRA (FFC 095 211 4)  
 0825756860  
 regina@kellaprince.co.za

Contact Head Office

013 7544400

The Crossing Shopping Centre, Shop 78, Off R40, Nelspruit, Mpumalanga 1200



Web Ref RL6685



**R1,589,000**

 3  2  2

**Monthly Bond Repayment** R16,401.47  
 Calculated over 20 years at 11% with no deposit.

**Transfer Costs** R48,455.00 **Bond Costs** R28,990.00

These calculations are only a guide. Please ask your conveyancer for exact calculations.

**Monthly Rates** R1,200

**FAMILY HOME WITH BIG YARD**

Discover this highly secure 3-bedroom family home featuring two bathrooms, including a main en-suite. The open-plan kitchen seamlessly connects to the lounge, creating a spacious and inviting atmosphere filled with natural light. The entire home is tiled and equipped with Trellidor security features for your peace of mind.

You'll also appreciate the convenience of a double garage and four undercover parking spaces, along with a generously sized yard perfect for pets and children to play in. Don't miss out on this fantastic opportunity—call me today to schedule your viewing!

**Features**

**Pets Allowed** Yes

<b>Interior</b>	
Bedrooms	3
Bathrooms	2
Kitchens	1
Recep. Rooms	2
Furnished	No

<b>Exterior</b>	
Garages	2
Carports / Parkings	4
Security	Yes
Dom. Accom.	1
Pool	No
Views	False

<b>Sizes</b>	
Floor Size	140m <sup>2</sup>
Land Size	608m <sup>2</sup>