



**Regina Bothma**

Non-Principal Property Practitioner  
Registered with PPRA (FFC 095 211 4)  
0825756860  
regina@kellaprinCE.co.za

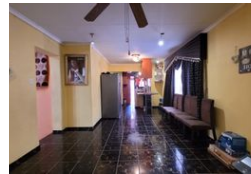
Contact Head Office

013 7544400

The Crossing Shopping Centre, Shop 78, Off R40, Nelspruit, Mpumalanga 1200



Web Ref RL6632



**R1,350,000**

**Monthly Bond Repayment** R13,934.54  
Calculated over 20 years at 11% with no deposit.

**Transfer Costs** R39,117.00    **Bond Costs** R27,105.00

These calculations are only a guide. Please ask your conveyancer for exact calculations.

**Monthly Rates** R1,000



**FAMILY HOME WITH STUDENT ACCOMODATION POTENTIAL**

**DUAL MANDATE**

This property has a lot of potential with its 4 bedrooms and 3 bathrooms (two bedrooms with en-suite bathrooms), open plan kitchen / dining room. Tiled flooring. Swimming pool and braai area with a double automated garage and under cover parking for extra two vehicles. Don't miss out on this opportunity, phone me today to view

**Features**

**Pets Allowed** Yes

<b>Interior</b>	
Bedrooms	4
Bathrooms	3
Kitchens	1
Recep. Rooms	2
Furnished	No

<b>Exterior</b>	
Garages	2
Carports / Parkings	2
Security	No
Pool	Yes
Views	False

<b>Sizes</b>	
Land Size	347m <sup>2</sup>