



Regina Bothma
 Non-Principal Property Practitioner
 Registered with PPRA (FFC 095 211 4)
 0825756860
 regina@kellaprinCE.co.za

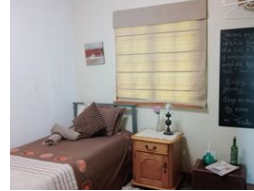
Contact Head Office

013 7544400

The Crossing Shopping Centre, Shop 78, Off R40, Nelspruit, Mpumalanga 1200



Web Ref RL6097



R920,000

Monthly Bond Repayment R9,496.13
 Calculated over 20 years at 11% with no deposit.

Transfer Costs R30,412.00 **Bond Costs** R23,335.00

These calculations are only a guide. Please ask your conveyancer for exact calculations.

2 2

SELF CATERING TWO BEDROOM HOLIDAY HOME IN SABIE

Wooden cottage with 2 bedrooms and two bathrooms with an open plan kitchen/living area. There is a veranda with the most amazing views. Underneath the wooden home is undercover parking for about 4 vehicles. All the furniture is included plus a small caravan.

Phone Regina at KellaprinCE Properties today to book your personal viewing.

Features

Interior		Exterior		Sizes	
Bedrooms	2	Carports / Parkings	4	Floor Size	80m ²
Bathrooms	2	Security	No	Land Size	894m ²
Kitchens	1	Pool	No		
Recep. Rooms	1	Views	False		
Furnished	No				

